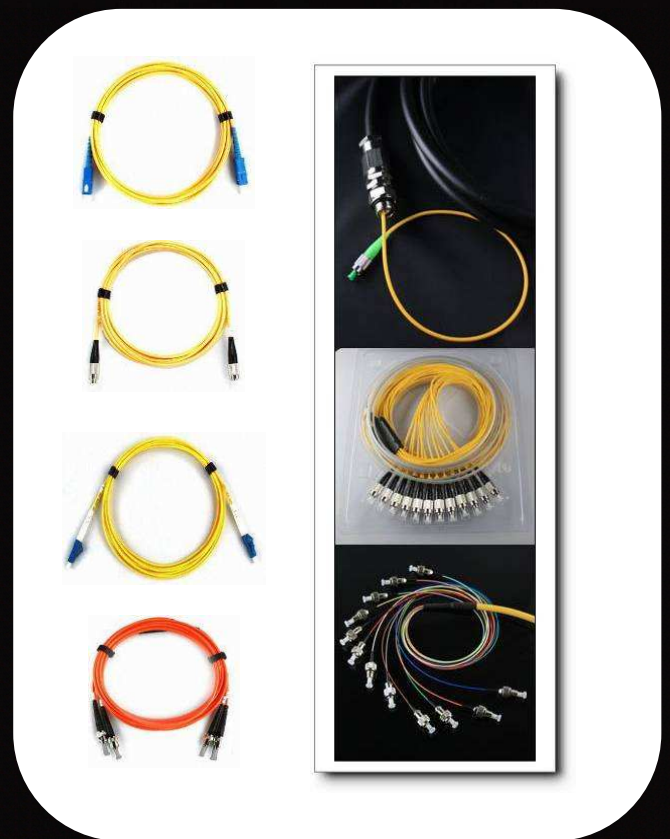


Fiber Optic Patchcord

Features:

- Available for all common types of connectivity systems
- Cable options:
 - 0.9mm buffered fiber
 - 1.6-2.0mm simplex/duplex cable
 - 3.0mm simplex/duplex cable
 - Other cable adoptions upon request
- Connector options: Simplex and duplex
- Fiber options:
 - Single-mode 9/125um, multi-mode 50/125um, 62.5/125um and OM3/OM4
- LC comply with IEC 61754-20
- SC comply with TIA/EIA 568, IEC 874-10
- FC comply with IEC 60874-7
- ST comply with TIA/EIA 568, IEC 874-14
- MU comply with IEC 61754-6
- MTRJ comply with TIA/EIA-604-12 and IEC61754-18
- DIN comply with IEC 61754-3
- Insertion loss test acc. to IEC 61300-3-4
- Return loss test acc. to IEC 61300-3-6
- Operation temperature: -20°C ~ +70



| Type | Single-mode | | Multimode | |
|-----------------------|----------------|---------------|-----------|---------|
| Wavelength | 1310nm/1550nm | 1310nm/1550nm | 850nm | 850nm |
| | IL (dB) | RL (dB) | IL (dB) | RL (dB) |
| LC SC FC ST MU (PC) | ≤ 0.2 | > 50 | ≤ 0.3 | N/A |
| LC SC FC ST MU (APC) | ≤ 0.3 | > 60 | N/A | N/A |
| MPO (PC) | ≤ 0.5 | ≥ 50 | ≤ 0.5 | ≥ 20 |
| MPO (APC) | ≤ 0.5 | ≥ 55 | N/A | N/A |
| MTRJ | ≤ 0.5 | > 50 | ≤ 0.5 | > 20 |
| Operating Temperature | -40 - +85 | | | |
| Storage Temperature | -40 - +85 | | | |
| Tensile Strength | 6.8 kg (15lbf) | | | |
| Mating Durability | 200 | | | |